



API Web Services Integration Guide For Software Developers

**Version history**

Version No.	Prepared by	Date	Reviewed & approved by	Description
1.0	Anand	09-Apr-2014		Initial Draft.
1.1	Anand	07-Aug-2014		Revision.



Table of Contents

Purpose of the Document	6
Web Services Design Overview	6
Technologies	6
SOAP.....	6
Available Services.....	6
Fund Management Services.....	7
Fault Response Field Descriptions	9
Pre-requisites before using the Web Services	10
Authentication Methods	10
GetAuthenticationToken	10
Implementation	10
Request Field Descriptions.....	11
Response Field Descriptions	13
Fault Codes.....	14
Transaction Data Methods.....	14
GetDepositTypes	14
Implementation	15
Request Field Descriptions.....	16
Response Field Descriptions	18
Fault Codes.....	20
DepositType Codes.....	20
PaymentMethod Codes	20
GetPaymentSettings	20
Implementation	21
Request Field Descriptions.....	22
PaymentMethod Codes	24
DepositType Codes.....	24
Sample Response:	24
Response Field Descriptions	25
Fault Codes.....	27
DepositType Codes.....	28
AddTransactionDetails	28



Implementation	29
Request Field Descriptions.....	31
DepositType Codes.....	34
Role Codes.....	34
PaymentMethod Codes	34
Sample Response:	35
Response Field Descriptions	36
Fault Codes.....	39
DepositType Codes.....	40
GetTransactionStatus	40
Implementation	40
Request Field Descriptions.....	41
Response Field Descriptions	42
Fault Codes.....	43
Status Codes.....	43
Payment Methods.....	43
AddPaymentCC	43
Implementation	44
Request Field Descriptions.....	45
PaymentMethod Codes	47
CardType Codes	47
Response Field Descriptions	47
Fault Codes.....	48
GetEFTDetails	49
Implementation	51
Request Field Descriptions.....	51
DepositType Codes.....	52
Response Field Descriptions	53
Fault Codes.....	55
AddPaymentEFT	55
Implementation	55
Request Field Descriptions.....	56
Response Field Descriptions	58
Fault Codes.....	59



AddPaymentPOLi	59
Encryption/Decryption.....	59
Implementation	60
Request Field Descriptions.....	61
Response Field Descriptions	63
Fault Codes.....	64
Testing guidelines for Confidis APIs	64
Beta Environment for Confidis APIs	64



Purpose of the Document

This documentation lays out the Web services implementation of CONFIDIS from a consumer's point of view. Primary purpose of this document is to guide CONFIDIS's API consumers integrate their system with CONFIDIS's.

Web Services Design includes behaviour of the system in successful as well as failed handles & logging of all requests, responses served by the platform. This document also contains brief testing guidelines section for the CONFIDIS Web services.

Web Services Design Overview

CONFIDIS Web Services is a set of web services which allows third party applications to integrate with Real Estate Fund's platform seamlessly through their existing system. All the functionalities which are available through the Real Estate Fund's web application (<https://www.realestatefunds.com.au>) are expected to be accessible through these services. Only that the release plan of these functionalities would be staggered.

Architectural design and product development of CONFIDIS Web Services is done as a [White label](#) solution so that with minimal or no changes they could be reused for other consumers in future.

Also, the web application and the web services will always remain in sync. Thus as soon as there is any functional change in the web application same will be modified in the web services.

Technologies

The web services are developed in SOAP. Extending these web services in other technologies is dependent on the requirements of future consumers.

SOAP

Created to communicate over HTTP (which is today supported by all internet browsers and services), SOAP (Simple Object Access Protocol) is an XML-based communication protocol for accessing a web service. SOAP may also be used over HTTPS with either simple or mutual authentication. HTTPS is the same protocol as HTTP at an application level but uses encrypted transport protocol underneath.

A SOAP message is an XML containing -

- An envelope element that identifies the XML document as a SOAP message and constitutes the root element. It contains the *namespace* attribute (which defines the SOAP envelope as a SOAP envelope) and the encoding *Style* attribute (defining the data types used in the document);
- an optional *Header* element, containing application specific information (e.g. authentication) about the SOAP message;
- a *Body* element, that contains the actual SOAP message (call and response information);
- an optional *Fault* element containing errors and status information; it must be a child of the *Body* element and can appear only once in a SOAP message.

Available Services

First release intends to fulfill basic minimum needs of a third party to create a transaction on CONFIDIS's platform. Thus for now, only MUST HAVE services are elaborated here.

Other services will be categorized, explained & implemented at a later stage.



Fund Management Services

Methods included in this service are sufficient for any third party to complete a transaction on the CONFIDIS platform. It performs the exact operations within the CONFIDIS's system that an 'Add Funds' trigger would do via the web application. Sequence of invocation could be tweaked depending on the implementation on consumer's side.

GetAuthenticationToken

GetDepositTypes

AddTransactionDetails

GetPaymentSettingsForDepositType

GetTransactionStatus

AddPaymentCC

GetEFTDetails

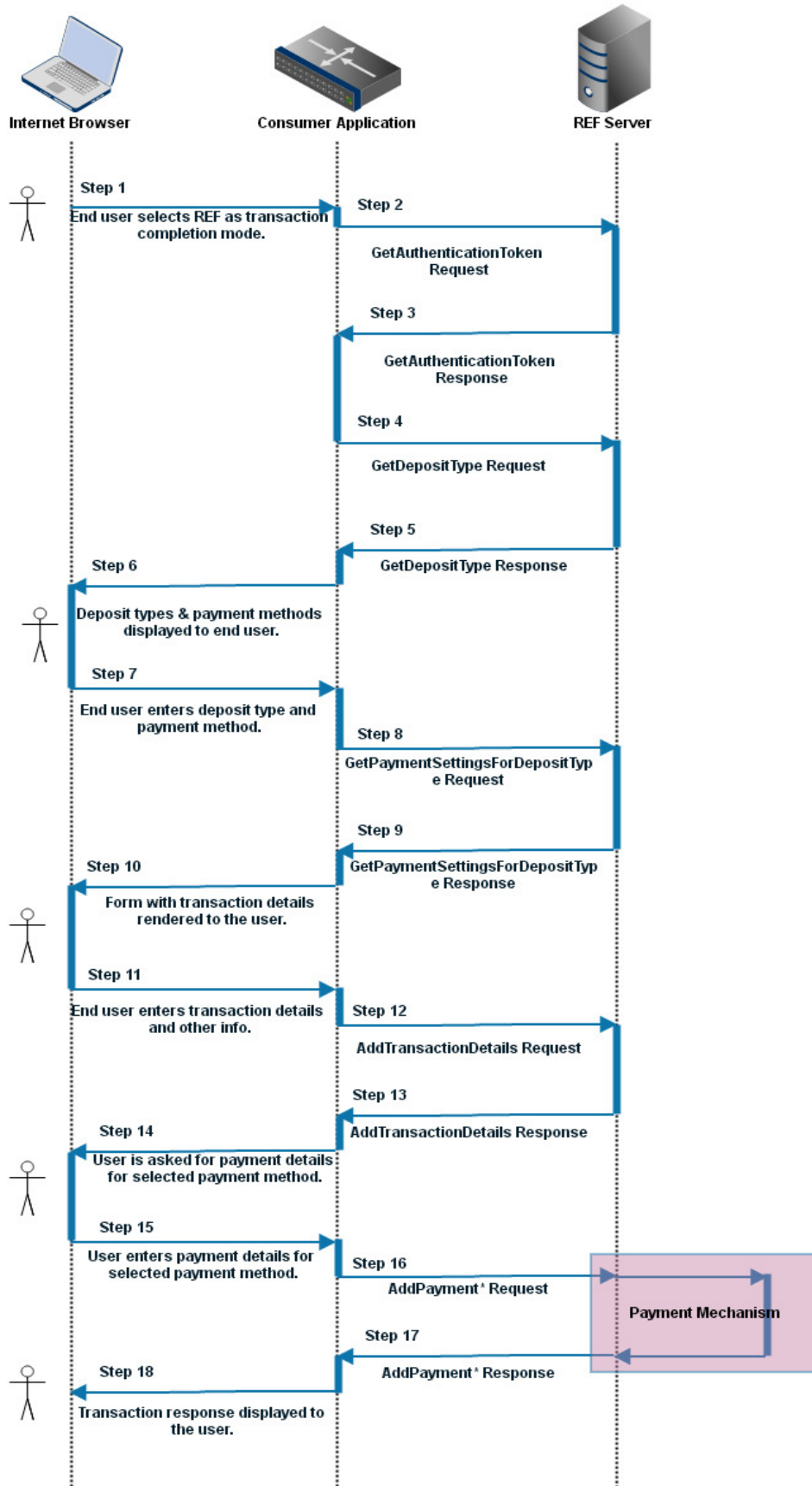
AddPaymentEFT

AddPaymentPOLi

Generic notes for all the methods described below -

- Authentication parameters are common across all the methods and these are intercepted for authentication before the whole request is served.

Sequence of method invocation is depicted in the diagram below. Note that the sequence could be different based on the consumer implementation.





SOAP Faults -

All the methods below would return SOAP faults in case of failure in processing or errors occurred during business logic validation. The common SOAP fault structure is as shown below. Customized Fault codes for every method are tabulated under respective methods.

Although for FaultCode we will use predefined values "server" and "client", we will use ErrorCode to set error code in our DB and Detail for sending complete error description.

```
<SOAP-ENV:Fault>
  <faultcode>SOAP-ENV:Client</faultcode>
  <faultstring>Invalid value for AuthToken, Please keep it blank or use "Default" in AuthToken</faultstring>
  <detail>
    <ServiceFault>
      <RequestId>53cf82961901b</RequestId>
      <ErrorCode>E00009</ErrorCode>
    </ServiceFault>
  </detail>
</SOAP-ENV:Fault>
```

Fault Response Field Descriptions

Field Name	Max Length	Data Type	Description
Fault	NA	complex element	This element in the XML accommodates all the children elements within itself.
faultcode	NA	string	This tells whether the fault is coming from Client or the Server.
faultstring	NA	string	Details of the reason for fault.
detail	NA	complex element	This complex element nests other elements inside it.
ServiceFault	NA	complex element	This complex element nests Request id and error code inside it.
RequestId	13	string	This is unique identifier to differentiate requests from each other. It would be useful for analysing responses to certain requests.
ErrorCode	6	string	This system generated error code allows consumers to insert conditional logic in their system.



Pre-requisites before using the Web Services

Consumer needs to hold an Active account on the CONFIDIS Web application. Consumer will need to get in touch with the CONFIDIS Admin for generation of API Key and API Code. These API Key and API code are to be used in all the services which the consumer intends to implement. These will be unique identifiers for authenticating the consumers in the CONFIDIS platform and their values will be static throughout the consumer life on CONFIDIS platform.

Authentication Methods

Currently only one method falls under this category. The mechanism for authentication is fairly simple in which the GetAuthenticationToken method will be used to generate and retrieve authentication token from CONFIDIS platform. Once successfully generated, all other services expect this AuthToken to be available in the authentication headers in requests from the consumer. Every subsequent request that reaches CONFIDIS server with that AuthToken and a valid combination of API Key & API Code extends the session timeout to the end of next X minutes (X minutes is defined in a property file).

Before serving every request CONFIDIS system checks if the AuthToken has already expired, if it has; it responds back successfully only to GetAuthenticationToken request (if AuthToken value is set to 'Default' or blank), in all other cases it responds with an error that Authentication Token is already expired.

System allows one user to have multiple active AuthTokens simultaneously. This is helpful if a consumer's application rests on a distributed service architecture.

GetAuthenticationToken

This method is the first request every consumer should trigger to start interacting with the CONFIDIS platform via other methods. Request parameters in this method are simply the authentication header that contains <AuthToken> parameter set to 'Default'.

Implementation

Live WSDL Address

SOAP <http://www.realestatefunds.com.au/addfunds/AddfundsServices?wsdl>

Beta WSDL Address

SOAP <http://www.realestatefunds.com.au/Beta/AddfundsServices?wsdl>

Operation

GetAuthenticationToken

Sample Request:



HTTP 1.1/OK

Content-Type: text/xml

```

<soapenv:Envelope xmlns:soapenv="http://schemas.xmlsoap.org/soap/envelope/"
xmlns:add="https://secure.realestatefunds.com.au/addfundsws/">
  <soapenv:Header>
    <add:Authentication>
      <APIKey>E4C9A7CF6DF3780E</APIKey>
      <APICode>07EBBB7F3771</APICode>
      <AuthToken>Default</AuthToken>
      <ClientUsername>refanand3@gmail.com</ClientUsername>
      <SourceIPAddress>127.0.0.1</SourceIPAddress>
    </add:Authentication>
  </soapenv:Header>
  <soapenv:Body>
    <add:GetAuthenticationToken/>
  </soapenv:Body>
</soapenv:Envelope>

```

Request Field Descriptions

Field Name	Field Type	Max Length	Data Type	Description
Authentication	M	NA	complex element	This is a complex element that nests all the authentication parameters. Should be present only once in the request.
APIKey	M	32	string	API Consumer identifier key. CONFIDIS will provide this value to the consumer. Should be present only once in the request.
APICode	M	32	string	API Consumer identifier code. Used along with the API Key to authenticate API consumer. CONFIDIS will provide this value to the consumer. Should be present only once in the request.
AuthToken	M	32	string	AuthToken is the token provided by server after initial authentication. This value should be set to 'Default' or blank when generating the token via GetAuthenticationToken method. Should be present only once in the request.



ClientUsername	M	100	string	To be cross verified against the user's username. This string is used by the consumer to login into the CONFIDIS web application. Should be present only once in the request.
SourceIPAddress	M	NA	string	Source IP address. System should validate this parameter against an IPv4 regex. To be stored against the request for security measures. Should be present only once in the request.
GetAuthenticationToken	M	NA	complex element	This element should not contain any other element. Should be present only once in the request.

Field Types: M – Mandatory, O - Optional

Sample Response:

HTTP 1.1/OK

Content-Type: text/xml

```
<SOAP-ENV:Envelope xmlns:SOAP-ENV="http://schemas.xmlsoap.org/soap/envelope/" xmlns:ns1="nsh"
xmlns:ns2="https://secure.realestatefunds.com.au/addfundsws/">
  <SOAP-ENV:Header>
    <ns1:Authentication>
      <APIKey>E4C9A7CF6DF3780E</APIKey>
      <APICode>07EBBB7F3771</APICode>
      <AuthToken>057702800eed8e01be861f8c77b6be7a083668719aa77d5be08e0fae25b3d932</AuthToken>
      <ClientUsername>refanand3@gmail.com</ClientUsername>
      <SourceIPAddress>127.0.0.1</SourceIPAddress>
    </ns1:Authentication>
  </SOAP-ENV:Header>
  <SOAP-ENV:Body>
    <ns2:GetAuthenticationTokenResponse>
      <RequestInfo>
        <RequestId>53da020cbd3ec</RequestId>
      </RequestInfo>
    </ns2:GetAuthenticationTokenResponse>
  </SOAP-ENV:Body>
</SOAP-ENV:Envelope>
```



Response Field Descriptions

Field Name	Max Length	Data Type	Description
Authentication	NA	complex element	This is a complex element that nests all the authentication response parameters. Will be present only once in the response.
APIKey	32	string	This parameter is echoed back from the request. Will be present only once in the response.
APICode	32	string	This parameter is echoed back from the request. Will be present only once in the response.
AuthToken	32	string	AuthToken is the token provided by server after initial authentication. This expires after X minutes if unused. Will be present only once in the response.
ClientUsername	100	string	This parameter is echoed back from the request. Will be present only once in the response.
SourceIPAddress	NA	NA	This parameter is echoed back from the request. Will be present only once in the response.
GetAuthenticationTokenResponse	NA	complex element	This is a complex element that nests the Response complex element inside it.
RequestInfo	NA	complex element	This is a complex element that nests all the Response parameters inside it.
RequestId	16	numeric	Unique identifier for every request served by CONFIDIS platform. This parameter can later be used to track down historical/archived requests & responses. Will be present only once in the response.



Fault Codes

FaultString	Detail
E00001	Invalid APIKey
E00002	Invalid APICode
E00003	Invalid ClientUsername
E00004	Invalid SourceIPAddress
E00005	Invalid AuthToken
E00006	Invalid APIKey or APICode
E00007	API is not activated for this user
E00008	User is not active, please contact administrator
E00009	Invalid value for AuthToken, Please keep it blank or use "Default" in AuthToken
E00010	AuthToken is expired

Transaction Data Methods

Methods under this header are used to get the transaction related data to CONFIDIS platform.

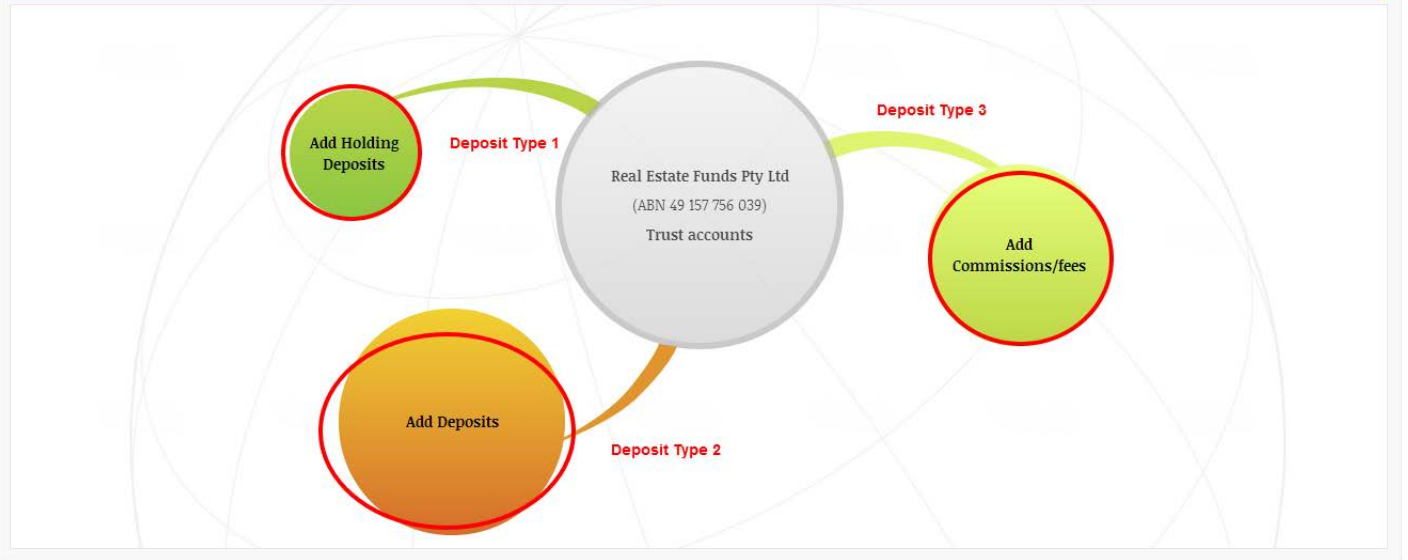
GetDepositTypes

This method retrieves various deposit types available for the API user through CONFIDIS's platform. Primary purpose of this method is to provide the consumer with unique identifier for each deposit type (1- Holding Deposit, 2- Deposit, 3- Commission) along with the available payment modes for each type.

Response to this method gives an overview of the deposit types similar to 'Add Funds' page on the web application (Image 1).



Please select carefully type of funds to be transferred directly into Real Estate Funds Pty Ltd (ABN 49 157 756 039) Trust accounts. Funds can be transferred via manual EFT (electronic funds transfer) or POLI, an auto EFT system.



Copyright © 2014 Real Estate Funds Pty Ltd. All rights reserved. | Privacy Policy | Terms & Conditions

Image 1: Add Funds landing page

Implementation

Live WSDL Address

SOAP <http://www.realestatefunds.com.au/addfunds/AddfundsServices?wsdl>

Beta WSDL Address

SOAP <http://www.realestatefunds.com.au/Beta/AddfundsServices?wsdl>

Operation

GetDepositTypes

Sample Request:



HTTP 1.1/OK

Content-Type: text/xml

```

<soapenv:Envelope xmlns:soapenv="http://schemas.xmlsoap.org/soap/envelope/"
xmlns:add="https://secure.realestatefunds.com.au/addfundsws/">
  <soapenv:Header>
    <add:Authentication>
      <APIKey>953F96E2E10FD7D2</APIKey>
      <APICode>DCBEB0825211</APICode>
      <AuthToken>fc3215bf48665c272211ad14ae585cb24de94afc7650c51fd1baaf134b1cbaf2</AuthToken>
      <ClientUsername>refanand@gmail.com</ClientUsername>
      <SourceIPAddress>127.0.0.1</SourceIPAddress>
    </add:Authentication>
  </soapenv:Header>
  <soapenv:Body>
    <add:GetDepositTypes/>
  </soapenv:Body>
</soapenv:Envelope>

```

Request Field Descriptions

Field Name	Field Type	Max Length	Data Type	Description
Authentication	M	NA	complex element	This is a complex elements that nests all the authentication parameters. Should be present only once in the request.
APIKey	M	32	string	API Consumer identifier key. CONFIDIS will provide this value to the consumer. Should be present only once in the request.
APICode	M	32	string	API Consumer identifier code. Used along with the API Key to authenticate API consumer. CONFIDIS will provide this value to the consumer. Should be present only once in the request.
AuthToken	M	32	string	AuthToken is the token provided by server after initial authentication. This should be set to the value returned by the GetAuthenticationToken method. Should be present only once in the request.



ClientUsername	M	100	string	<p>To be cross verified against the user's username.</p> <p>This string is used by the consumer to login into the CONFIDIS web application.</p> <p>Should be present only once in the request.</p>
SourceIPAddress	M	NA	string	<p>Source IP address. System should validate this parameter against an IPv4 regex.</p> <p>To be stored against the request for security measures.</p> <p>Should be present only once in the request.</p>
GetDepositTypes	M	NA	string	<p>This parameter is expected in the request even though its value should be set to blank.</p> <p>Should be present only once in the request.</p>

Field Types: M – Mandatory, O - Optional



Sample

Response:

```
<SOAP-ENV:Envelope xmlns:SOAP-ENV="http://schemas.xmlsoap.org/soap/envelope/"
xmlns:ns1="https://secure.realestatefunds.com.au/addfundsws/">
  <SOAP-ENV:Body>
    <ns1:GetDepositTypesResponse>
      <RequestInfo>
        <RequestId>53da07665756d</RequestId>
      </RequestInfo>
      <DepositTypes>
        <DepositType>
          <Code>1</Code>
          <Description>Holding Deposit</Description>
          <Name>Holding Deposit</Name>
          <PaymentMethods>
            <PaymentMethod>
              <Code>Poli</Code>
              <Name>Poli</Name>
            </PaymentMethod>
            <PaymentMethod>
              <Code>CreditCard</Code>
              <Name>Credit card</Name>
            </PaymentMethod>
            <PaymentMethod>
              <Code>ManualEFT</Code>
              <Name>Manual EFT</Name>
            </PaymentMethod>
          </PaymentMethods>
        </DepositType>
      </DepositTypes>
    </ns1:GetDepositTypesResponse>
  </SOAP-ENV:Body>
</SOAP-ENV:Envelope>
```

Response Field Descriptions

Field Name	Max Length	Data Type	Description
GetDepositTypesResponse	NA	complex element	This is a complex element that nests all the Response parameters inside it.
RequestInfo	NA	complex element	This is a complex element that nests request information inside it.
RequestId	16	numeric	Unique identifier for every request served by CONFIDIS platform. This parameter can later be used to track down historical/archived requests & responses.



			Will be present only once in the response.
DepositTypes	NA	complex element	This complex element nests DepositType inside it. Will be present only once in the response.
DepositType	NA	complex element	This complex element nests all the parameters within Deposit Type. Can be present more than once in the response.
Code	1	numeric	Code to identify available deposit types for API user. Could be repeated if DepositType complex element is present more than once. Codes are enumerated in the table below.
Description	512	string	Description and other information about the deposit type. Could be repeated if DepositType complex element is present more than once.
Name	32	string	Name of the corresponding deposit type. Could be repeated if DepositType complex element is present more than once.
PaymentMethods	NA	complex element	This complex element nests payment method complex elements inside it. Could be repeated if DepositType complex element is present more than once.
PaymentMethod	NA	complex element	This complex element nests all the payment method parameters inside it. Could be repeated if multiple payment methods are available for selected deposit type.
Code	1	numeric	Code to identify available payment method for given deposit type. Could be repeated if PaymentMethods complex element is present more than once.
Name	32	string	Name of the payment method. Could be repeated if PaymentMethods complex element is present more than once.



Field Types: M – Mandatory, O - Optional

Note that the FaultCodes returned by this method are in addition to the FaultCodes returned by GetAuthenticationToken as Authentication Header is part of all the requests.

Fault Codes

FaultString	Detail
E00101	Invalid DepositTypeCode
E00102	Invalid PaymentMethodCode
E00103	Provided Payment Method is not available for given Deposit Type
E00104	No data found for this user

DepositType Codes

DepositType Code	DepositType Name
1	Holding deposit
2	Deposit
3	Commission

PaymentMethod Codes

PaymentMethod Code	PaymentMethod Name
CreditCard	Credit Card
Poli	POLi
ManualeFT	ManualeFT

GetPaymentSettings

This method helps consumers retrieve detailed information about the configured payment settings for a given deposit type. Primary function of this method is to help third parties in calculating the payment amount for completing a transaction remotely on CONFIDIS platform. Payment settings parameters, as seen on the web application are displayed in the Image 4 below.



Payment settings

Accept poli payments
 Accept credit cards
 Accept manual EFT

Holding Deposit

Fixed Amount

Credit cards:

Poli:

Manual EFT:

Calculated amount (0.25%) [?]
 Variable amount [?]

Credit Cards

Minimum: Maximum:

Poli

Minimum: Maximum:

Manual EFT

Minimum: Maximum:

Commissions - Add part of full commissions

Poli

Minimum: Maximum:

Manual EFT

Minimum: Maximum:

Deposit-Add part or Full Deposit

Poli

Minimum: Maximum:

Manual EFT

Minimum: Maximum:

Image 4: Payment settings parameters

Implementation

Live WSDL Address

SOAP <http://www.realestatefunds.com.au/addfunds/AddfundsServices?wsdl>

Beta WSDL Address

SOAP <http://www.realestatefunds.com.au/Beta/AddfundsServices?wsdl>

Operation

GetPaymentSettings

*Sample Request:*

HTTP/1.1 OK

Content-Type: text/xml

```

<soapenv:Envelope xmlns:soapenv="http://schemas.xmlsoap.org/soap/envelope/"
xmlns:add="https://secure.realestatefunds.com.au/addfundsws/">
  <soapenv:Header>
    <add:Authentication>
      <APIKey>E4C9A7CF6DF3780E</APIKey>
      <APICode>07EBBB7F3771</APICode>
      <AuthToken>d329bd61e7527b722a6a7c29efa5570d2322a8de370eda1e2464407cb3cd6821
      </AuthToken>
      <ClientUsername>refanand3@gmail.com</ClientUsername>
      <SourceIPAddress>127.0.0.1</SourceIPAddress>
    </add:Authentication>
  </soapenv:Header>
  <soapenv:Body>
    <add:GetPaymentSettings>
      <PaymentMethodCode>CreditCard</PaymentMethodCode>
      <DepositTypeCode>1</DepositTypeCode>
    </add:GetPaymentSettings>
  </soapenv:Body>
</soapenv:Envelope>

```

Request Field Descriptions

Field Name	Field Type	Max Length	Data Type	Description
Authentication	M	NA	complex element	This is a complex element that nests all the authentication parameters. Should be present only once in the request.
APIKey	M	32	string	API Consumer identifier key. CONFIDIS will provide this value to the consumer. Should be present only once in the request.
APICode	M	32	string	API Consumer identifier code. Used along with the API Key to authenticate API consumer. CONFIDIS will provide this value to the consumer. Should be present only once in the



				request.
AuthToken	M	32	string	<p>AuthToken is the token provided by server after initial authentication.</p> <p>This should be set to the value returned by the GetAuthenticationToken method.</p> <p>Should be present only once in the request.</p>
ClientUsername	M	100	string	<p>To be cross verified against the user's username.</p> <p>This string is used by the consumer to login into the CONFIDIS web application.</p> <p>Should be present only once in the request.</p>
SourceIPAddress	M	NA	string	<p>Source IP address. System should validate this parameter against an IPv4 regex.</p> <p>To be stored against the request for security measures.</p> <p>Should be present only once in the request.</p>
GetPaymentSettings	M	NA	complex element	<p>This complex element nests all the request parameters inside it.</p> <p>Should be present only once in the request.</p>
PaymentMethodCode	M	1	string	<p>Code to identify payment method.</p> <p>Should be present only once in the request.</p> <p>Possible payment method codes are enumerated below.</p>
DepositTypeCode	M	1	numeric	<p>Code to identify deposit type for the current transaction.</p> <p>Should be present only once in the response.</p> <p>Enumeration is tabulated below.</p>

Field Types: M – Mandatory, O - Optional

*PaymentMethod Codes*

PaymentMethod Code	PaymentMethod Name
Creditcard	Credit Card
Poli	POLi
ManualEFT	EFT

DepositType Codes

DepositType Code	DepositType Name
1	Holding deposit
2	Deposit
3	Commission

Sample Response:

Payment settings complex element in the response will vary. The variants are highlighted in blue color below.



Calculated Amount Response

```
<SOAP-ENV:Envelope xmlns:SOAP-ENV="http://schemas.xmlsoap.org/soap/envelope/"
xmlns:ns1="https://secure.realestatefunds.com.au/addfundsws/">
  <SOAP-ENV:Body>
    <ns1:GetPaymentSettingsResponse>
      <RequestInfo>
        <RequestId>53da0e287e418</RequestId>
      </RequestInfo>
      <PaymentSettings>
        <CalculatedAmount>
          <MinAmount>25</MinAmount>
          <MaxAmount>1000</MaxAmount>
          <Percentage>0.25</Percentage>
        </CalculatedAmount>
      </PaymentSettings>
    </ns1:GetPaymentSettingsResponse>
  </SOAP-ENV:Body>
</SOAP-ENV:Envelope>
```

Variable Amount Response

```
<PaymentSettings>
  <VariableAmount>
    <MinAmount>50</MinAmount>
    <MaxAmount>30000</MaxAmount>
  </VariableAmount>
</PaymentSettings>
```

Fixed Amount Response

```
<PaymentSettings>
  <FixedAmount>
    <FixAmount>1000</FixAmount>
  </FixedAmount>
</PaymentSettings>
```

Response Field Descriptions

Field Name	Max Length	Data Type	Description
GetPaymentSettingsResponse	NA	complex element	This is a complex element that nests all the Response parameters inside it.
RequestInfo	NA	complex element	This is a complex element that nests all the request information inside it.
RequestId	16	numeric	Unique identifier for every request served by CONFIDIS



			<p>platform.</p> <p>This parameter can later be used to track down historical/archived requests & responses.</p> <p>Will be present only once in the response.</p>
PaymentSettings	NA	complex element	<p>This element nests payment settings parameters inside it.</p> <p>Will be present only once in the response.</p>
Calculated Amount Variant			
CalculatedAmount	NA	complex element	<p>This element holds all the parameters defined in case the amount is calculated.</p> <p>Will be present only once in the response.</p>
MinAmount	NA	float	<p>This elements holds the minimum amount that is expected as input.</p> <p>Two digits after decimal are allowed.</p> <p>Will be present only once in the response.</p>
MaxAmount	NA	float	<p>This elements holds the maximum amount that is expected as input.</p> <p>Two digits after decimal are allowed.</p> <p>Will be present only once in the response.</p>
Percentage	NA	float	<p>This element dictates what percentage of the Agreement amount is to be used.</p> <p>Two digits after decimal are allowed.</p> <p>Will be present only once in the response.</p>
Variable Amount Variant			



VariableAmount	NA	complex element	This element holds all the parameters defined in case the amount is variable. Will be present only once in the response.
MinAmount	NA	float	This elements holds the minimum amount that is expected as input. Two digits after decimal are allowed. Will be present only once in the response.
MaxAmount	NA	float	This elements holds the maximum amount that is expected as input. Two digits after decimal are allowed. Will be present only once in the response.
Fixed Amount Variant			
FixedAmount	NA	complex element	This element holds all the parameters defined in case the amount is fixed. Will be present only once in the response.
FixAmount	NA	float	Fixed amount is returned here as part of the response. Two digits after decimal are allowed. Will be present only once in the response.

Note that the FaultCodes returned by this method are in addition to the FaultCodes returned by GetAuthenticationToken as Authentication Header is a part of all the requests.

Fault Codes

FaultString	FaultCode	Detail
E00101	Client	Invalid DepositTypeCode.
E00102	Client	Invalid PaymentMethodCode.



E00103	Client	Provided Payment Method is not available for given Deposit Type.
--------	--------	--

DepositType Codes

DepositType Code	DepositType Name
1	Holding deposit
2	Deposit
3	Commission

AddTransactionDetails

This method combines parameters of Step 1 & 2 from the Add Funds functionality (refer Image 2 & 3 below). This will be the first step for creating a successful transaction in CONFIDIS's system. Comprising 'Your Details' and 'Reference - Property/Contract' parameters, this method will echo all the details in the response along with the Transaction number that is generated by CONFIDIS platform.

Step 1 : Your details Step 2 : Reference - Property/Contract Step 3 : Confirm details Step 4 : Make payment

Add part or full commission

Step 1 of 4

Entity name *: Role *:

Contact

First name *: Street :

Last name : Suburb :

Email address *: State :

Mobile number *: Post code :

Phone number : Country :

Fax :

Cancel Next

Image 2: Step 1 in Add Funds flow



Add holding deposit

Step 2 of 4 ↻

Reference - Property/Contract *:	<input type="text"/>	Address:	<input type="text"/>
Deal reference :	<input type="text"/>	Suburb :	<input type="text"/>
Project reference :	<input type="text"/>	State :	<input type="text"/>
Master project :	<input type="text"/>	Post code :	<input type="text"/>
Payment Method *:	<input type="text" value="Please select payment method"/>	Country :	<input type="text" value="Please select country"/>
Agreement value (AUD \$) :	<input type="text"/>		
Holding deposit amount(AUD \$) *:	<input type="text"/>		
Property/Contract information :	<input type="text"/>		

Image 3: Step 2 in Add Funds flow

*Implementation***Live WSDL Address**SOAP <http://www.realestatefunds.com.au/addfunds/AddfundsServices?wsdl>**Beta WSDL Address**SOAP <http://www.realestatefunds.com.au/Beta/AddfundsServices?wsdl>**Operation**

AddTransactionDetails

Sample Request:



```
<soapenv:Envelope xmlns:soapenv="http://schemas.xmlsoap.org/soap/envelope/"
xmlns:add="https://secure.realestatefunds.com.au/addfundsws/">
  <soapenv:Header>
    <add:Authentication>
      <APIKey>E4C9A7CF6DF3780E</APIKey>
      <APICode>07EBBB7F3771</APICode>
      <AuthToken>14d20d089381c32fbd6ae7af98e3e6666ecd003b33b7dbab60e6b8d8efb8f0d3</AuthToken>
      <ClientUsername>refanand3@gmail.com</ClientUsername>
      <SourceIPAddress>127.0.0.1</SourceIPAddress>
    </add:Authentication>
  </soapenv:Header>
  <soapenv:Body>
    <add:AddTransactionDetails>
      <PersonalDetails>
        <EntityName>Anand Entity</EntityName>
        <RoleCode>2</RoleCode>
        <FirstName>Anand</FirstName>
        <LastName>Last name</LastName>
        <EmailAddress>refanand@gmail.com</EmailAddress>
        <MobileNumber>9923156359</MobileNumber>
        <PhoneNumber>02452225915</PhoneNumber>
        <Fax>123456</Fax>
        <Street>Street</Street>
        <Suburb>Suburb</Suburb>
        <State>State</State>
        <PostalCode>Postal code</PostalCode>
        <CountryCode>IN</CountryCode>
      </PersonalDetails>
      <PropertyDetails>
        <PropertyReference>Propreference</PropertyReference>
        <DealReference>Deal reference</DealReference>
        <ProjectReference>Project Reference</ProjectReference>
        <MasterProject>Master Project</MasterProject>
        <PropertyInformation>PropertyInformation</PropertyInformation>
        <Address>Address</Address>
        <Suburb>praeterea aut</Suburb>
        <State>claustra fremunt</State>
        <PostalCode>imperio premit</PostalCode>
        <CountryCode>IN</CountryCode>
      </PropertyDetails>
      <TransactionAmountDetails>
        <DepositTypeCode>1</DepositTypeCode>
        <PaymentMethodCode>Poli</PaymentMethodCode>
        <AgreementValueAmount>100000.00</AgreementValueAmount>
        <AgreementValueCurrency>AUD</AgreementValueCurrency>
        <DepositAmount>250</DepositAmount>
        <DepositCurrency>AUD</DepositCurrency>
      </TransactionAmountDetails>
    </add:AddTransactionDetails>
  </soapenv:Body>
</soapenv:Envelope>
```



Request Field Descriptions

Field Name	Field Type	Max Length	Data Type	Description
Authentication	M	NA	complex element	This is a complex element that nests all the authentication parameters. Should be present only once in the request.
APIKey	M	32	string	API Consumer identifier key. CONFIDIS will provide this value to the consumer. Should be present only once in the request.
APICode	M	32	string	API Consumer identifier code. Used along with the API Key to authenticate API consumer. CONFIDIS will provide this value to the consumer. Should be present only once in the request.
AuthToken	M	32	string	AuthToken is the token provided by server after initial authentication. This should be set to the value returned by the GetAuthenticationToken method. Should be present only once in the request.
ClientUsername	M	100	string	To be cross verified against the user's username. This string is used by the consumer to login into the CONFIDIS web application. Should be present only once in the request.
SourceIPAddress	M	NA	string	Source IP address. System should validate this parameter against an IPv4 regex. To be stored against the request for security measures. Should be present only once in the request.
AddTransactionDetails	M	NA	complex element	Complex element to nest all the transaction details. Should be present only once in the request.
PersonalDetails	M	NA	complex element	This complex element nests all the personal details inside it.



EntityName	M	100	string	Name of the entity. Should be present only once in the request.
RoleCode	M	1	numeric	Code corresponding to respective roles. Should be present only once in the request. Possible values are tabulated below.
FirstName	M	100	string	First Name of the person placing transaction. Should be present only once in the request.
LastName	O	100	string	Last Name of the person placing transaction. Should be present only once in the request.
EmailAddress	M	100	string	Email of the person placing transaction. To be validated against regex for Email. Should be present only once in the request.
MobileNumber	M	10	numeric	Mobile number of the person placing transaction. Should be present only once in the request.
PhoneNumber	O	20	numeric	Phone number of the person placing transaction. Should be present only once in the request.
Fax	O	20	numeric	Fax of the person placing transaction. Should be present only once in the request.
Street	O	500	string	Address of the person placing transaction. Should be present only once in the request.
Suburb	O	100	string	Suburb of the person placing transaction. Should be present only once in the request.
State	O	100	string	State of the person placing transaction. Should be present only once in the request.
PostalCode	O	20	string	Post code of the person placing transaction. Should be present only once in the request.
CountryCode	O	2	string	ISO 3166 alpha-2 country code. (Details) Should be present only once in the request.



PropertyDetails	M	NA	complex element	This element nests inside it all the property detail parameters.
PropertyReference	M	16	string	Property reference identifier. Should be present only once in the request.
DealReference	O	100	string	Deal reference identifier. Should be present only once in the request.
ProjectReference	O	100	string	Project reference identifier. Should be present only once in the request.
MasterProject	O	100	string	Master project identifier. Should be present only once in the request.
Address	O	500	string	Address of the property under transaction. Should be present only once in the request.
Suburb	O	100	string	Suburb of the property under transaction. Should be present only once in the request.
State	O	100	string	State of the property under transaction. Should be present only once in the request.
PostalCode	O	20	string	Post code of the property under transaction. Should be present only once in the request.
CountryCode	O	2	string	ISO 3166 alpha-2 country code. (Details) Should be present only once in the request.
PropertyInformation	O	500	string	Other information about the property. Should be present only once in the request.
TransactionAmountDetails	M	NA	complex element	This element nests inside it all the parameters related to the transaction amount. Should be present only once in the request.
DepositTypeCode	M	1	numeric	Code to identify deposit type for the current transaction. Should be present only once in the response. Enumeration is tabulated below.
PaymentMethodCode	M	1	string	Code to identify payment method.



				Should be present only once in the request. Possible payment method codes are enumerated below.
AgreementValueAmount	M	10	numeric	This parameter sends the Amount of the agreement to CONFIDIS platform. Decimal character is allowed for this field.
AgreementValueCurrency	M	3	string	Currency code ISO-4217 e.g. AUD
DepositAmount	M	10	numeric	Amount to be deposited in CONFIDIS's trust account is specified by this parameter. For deposit types configured as Calculated amount this value will be overridden by system calculated amount. Decimal character is allowed for this field.
DepositCurrency	M	3	string	Currency code ISO-4217 e.g. AUD

Field Types: M – Mandatory, O - Optional

DepositType Codes

DepositType Code	DepositType Name
1	Holding deposit
2	Deposit
3	Commission

Role Codes

Role Code	Role Name
1	Purchaser
2	Vendor
3	Service Provider

PaymentMethod Codes

PaymentMethod Code	PaymentMethod Name
CreditCard	Credit Card
Poli	POLi
ManualEFT	Manual EFT

*Sample Response:*

```

<SOAP-ENV:Envelope xmlns:SOAP-ENV="http://schemas.xmlsoap.org/soap/envelope/"
xmlns:ns1="https://secure.realestatefunds.com.au/addfundsws/">
  <SOAP-ENV:Body>
    <ns1:AddTransactionDetailsResponse>
      <PersonalDetails>
        <EntityName>Anand Entity</EntityName>
        <RoleCode>2</RoleCode>
        <FirstName>Anand</FirstName>
        <LastName>Last name</LastName>
        <EmailAddress>refanand@gmail.com</EmailAddress>
        <MobileNumber>9923156359</MobileNumber>
        <PhoneNumber>02452225915</PhoneNumber>
        <Fax>123456</Fax>
        <Street>Street</Street>
        <Suburb>Suburb</Suburb>
        <State>State</State>
        <PostalCode>Postal code</PostalCode>
        <CountryCode>IN</CountryCode>
      </PersonalDetails>
      <PropertyDetails>
        <PropertyReference>Propreference</PropertyReference>
        <DealReference>Deal reference</DealReference>
        <ProjectReference>Project Reference</ProjectReference>
        <MasterProject>Master Project</MasterProject>
        <PropertyInformation>PropertyInformation</PropertyInformation>
        <Address>Address</Address>
        <Suburb>praeterea aut</Suburb>
        <State>claustra fremunt</State>
        <PostalCode>imperio premit</PostalCode>
        <CountryCode>IN</CountryCode>
      </PropertyDetails>
      <TransactionAmountDetails>
        <DepositTypeCode>1</DepositTypeCode>
        <PaymentMethodCode>Poli</PaymentMethodCode>
        <AgreementValueAmount>100000</AgreementValueAmount>
        <AgreementValueCurrency>AUD</AgreementValueCurrency>
        <DepositAmount>1000</DepositAmount>
        <DepositCurrency>AUD</DepositCurrency>
      </TransactionAmountDetails>
      <TransactionDetails>
        <TransactionNumber>8036D97B</TransactionNumber>
        <TransactionMessage>Added successfully</TransactionMessage>
      </TransactionDetails>
    </ns1:AddTransactionDetailsResponse>
  </SOAP-ENV:Body>
</SOAP-ENV:Envelope>

```



Response Field Descriptions

Field Name	Max Length	Data Type	Description
AddTransactionDetailsResponse	NA	complex element	This is a complex element that nests all the Response parameters inside it.
RequestInfo	NA	complex element	This element nests inside it the RequestId parameter.
RequestId	16	numeric	Unique identifier for every request served by CONFIDIS platform. This parameter can later be used to track down historical/archived requests & responses. Will be present only once in the response.
DepositTypeCode	1	numeric	Code to identify deposit type for the current transaction. Will be present only once in the response. Enumeration is tabulated below.
PersonalDetails	NA	complex element	This element nests inside it the response to PersonalDetails request. Will be present only once in the response.
EntityName	100	string	Name of the entity, echoed back from the request. Will be present only once in the response.
RoleCode	1	numeric	Code corresponding to respective roles, echoed back from the request. Will be present only once in the response. Possible values are tabulated below.
FirstName	100	string	First Name of the person placing transaction, echoed back from the request. Will be present only once in the response.
LastName	100	string	Last Name of the person placing transaction, echoed back from the request. Will be present only once in the response.
EmailAddress	100	string	Email of the person placing transaction, echoed back from the request.



			Will be present only once in the response.
MobileNumber	10	numeric	Mobile number of the person placing transaction, echoed back from the request. Will be present only once in the response.
PhoneNumber	20	numeric	Phone number of the person placing transaction, echoed back from the request. Will be present only once in the response.
Fax	20	numeric	Fax of the person placing transaction, echoed back from the request. Will be present only once in the response.
Street	500	string	Address of the person placing transaction, echoed back from the request. Will be present only once in the response.
Suburb	100	string	Suburb of the person placing transaction, echoed back from the request. Will be present only once in the response.
State	100	string	State of the person placing transaction, echoed back from the request. Will be present only once in the response.
PostalCode	20	string	Post code of the person placing transaction, echoed back from the request. Will be present only once in the response.
CountryCode	2	string	ISO 3166 alpha-2 country code. (Details) Will be present only once in the response.
PropertyDetails	NA	complex element	This element nests inside it all the property details parameters. Will be present only once in the response.
PropertyReference	16	string	Property reference identifier, echoed back from the request. Will be present only once in the response.
DealReference	100	string	Deal reference identifier, echoed back from the request. Will be present only once in the response.



ProjectReference	100	string	Project reference identifier, echoed back from the request. Will be present only once in the response.
MasterProject	100	string	Master project identifier, echoed back from the request. Will be present only once in the response.
Address	500	string	Address of the property under transaction, echoed back from the request. Will be present only once in the response.
Suburb	100	string	Suburb of the property under transaction, echoed back from the request. Will be present only once in the response.
State	100	string	State of the property under transaction, echoed back from the request. Will be present only once in the response.
PostalCode	20	string	Post code of the property under transaction, echoed back from the request. Will be present only once in the response.
CountryCode	2	string	ISO 3166 alpha-2 country code. (Details) Will be present only once in the response.
PropertyInformation	500	string	Other information about the property, echoed back from the request. Will be present only once in the response.
TransactionAmountDetails	NA	complex element	This element nests inside it all the parameters related to Transaction amount. Will be present only once in the response.
DepositTypeCode	1	numeric	Code to identify deposit type for the current transaction. Echoed back in the response. Enumeration is tabulated below.
PaymentMethodCode	1	string	Code to identify payment method. Echoed back in the response. Possible payment method codes are



			enumerated below.
DepositAmount	10	numeric	Amount to be deposited in CONFIDIS's trust account is specified by this parameter. For deposit types configured as Calculated amount this value will be overridden by system calculated amount. Decimal character is allowed for this field.
DepositCurrency	3	string	Currency code ISO-4217 e.g. AUD
TransactionDetails	NA	complex element	This element returns all the nested elements related to transaction details. Will be present only once in the response.
TransactionNumber	20	string	Transaction number generated by CONFIDIS platform. Will be present only once in the response.
TransactionSuccessMessage	100	string	Transaction success message. Will be present only once in the response.

Field Types: M – Mandatory, O - Optional

Note that the FaultCodes returned by this method are in addition to the FaultCodes returned by GetAuthenticationToken as Authentication Header is a part of all the requests.

Fault Codes

FaultString	Detail
E00401	PersonalDetails - EntityName cannot be blank and it can have alphanumeric characters only
E00402	PersonalDetails - EntityName can have alphanumeric characters only
E00403	PersonalDetails - FirstName cannot be blank and it can have alphanumeric characters only
E00404	PersonalDetails - FirstName can have alphanumeric characters only
E00405	PersonalDetails - Email cannot be blank
E00406	PersonalDetails - Email address invalid
E00407	PersonalDetails - Mobile Number cannot be blank
E00408	PropertyDetails - PropertyReference cannot be blank
E00409	PersonalDetails - PaymentMethodCode cannot be blank
E00410	PersonalDetails - PaymentMethodCode is invalid



E00411	PersonalDetails - DepositTypeCode cannot be blank
E00412	PersonalDetails - DepositTypeCode is invalid
E00413	TransactionAmountDetails - DepositAmount is invalid
E00414	Transaction could not be added due to system error
E00415	PersonalDetails - CountryCode not valid
E00416	PropertyDetails - CountryCode not valid

DepositType Codes

DepositType Code	DepositType Name
1	Holding deposit
2	Deposit
3	Commission

GetTransactionStatus

This method helps consumers retrieve status of the transaction using transaction number. This functionality becomes particularly helpful when transaction times out or the consumer does not receive the confirmation in case there is network issue after posting the transaction to CONFIDIS's servers.

Implementation

Live WSDL Address

SOAP <http://www.realestatefunds.com.au/addfunds/AddfundsServices?wsdl>

Staging WSDL Address

SOAP <http://www.realestatefunds.com.au/Staging/AddfundsServices?wsdl>

Operation

GetTransactionStatus

*Sample Request:*

```

<soapenv:Envelope xmlns:soapenv="http://schemas.xmlsoap.org/soap/envelope/"
xmlns:add="https://secure.realestatefunds.com.au/addfundsws/">
  <soapenv:Header>
    <add:Authentication>
      <APIKey>E4C9A7CF6DF3780E</APIKey>
      <APICode>07EBBB7F3771</APICode>
      <AuthToken>c1961ceb0f003029bdc5435d073753039f25af085c11dd1d42684456e810553</AuthToken>
      <ClientUsername>refanand3@gmail.com</ClientUsername>
      <SourceIPAddress>127.0.0.1</SourceIPAddress>
    </add:Authentication>
  </soapenv:Header>
  <soapenv:Body>
    <add:GetTransactionStatus>
      <TransactionNumber>0</TransactionNumber>
    </add:GetTransactionStatus>
  </soapenv:Body>
</soapenv:Envelope>

```

Request Field Descriptions

Field Name	Field Type	Max Length	Data Type	Description
Authentication	M	NA	complex element	This is a complex elements that nests all the authentication parameters. Should be present only once in the request.
APIKey	M	32	string	API Consumer identifier key. CONFIDIS will provide this value to the consumer. Should be present only once in the request.
APICode	M	32	string	API Consumer identifier code. Used along with the API Key to authenticate API consumer. CONFIDIS will provide this value to the consumer. Should be present only once in the request.
AuthToken	M	32	string	AuthToken is the token provided by server after initial authentication. This should be set to the value returned by the GetAuthenticationToken method. Should be present only once in the request.
ClientUsername	M	100	string	To be cross verified against the user's



				username. This string is used by the consumer to login into the CONFIDIS web application. Should be present only once in the request.
SourceIPAddress	M	NA	string	Source IP address. System should validate this parameter against an IPv4 regex. To be stored against the request for security measures. Should be present only once in the request.
GetTransactionStatus	M	NA	complex element	This element nests all the request parameters inside it. Should be present only once in the request.
TransactionNumber	M	16	string	Transaction Number must be the same as what was returned in AddTransactionDetails method.

Sample Response:

```
<? xml version="1.0" encoding="utf-8" ?>
<SoapEnvelope>
  <SOAP-ENV:Body>
    <ns1:GetTransactionStatusResponse>
      <RequestInfo>
        <RequestId>53df3c26cfcb0</RequestId>
      </RequestInfo>
      <TransactionNumber>87F65764</TransactionNumber>
      <Status>DRAFT</Status>
    </ns1:GetTransactionStatusResponse>
  </SOAP-ENV:Body>
</SOAP-ENV:Envelope>
```

Response Field Descriptions

Field Name	Max Length	Data Type	Description
GetTransactionStatusResponse	NA	complex element	This is a complex element that nests all the Response parameters inside it.
RequestInfo	NA	complex element	This complex element nests inside it the RequestId.
RequestId	16	numeric	Unique identifier for every request served by CONFIDIS platform.



			This parameter can later be used to track down historical/archived requests & responses. Should be present only once in the response.
TransactionNumber	16	string	Transaction Number must be the same as what was returned in AddTransactionDetails method. Should be present only once in the response.
Status	NA	string	Status of the transaction. Should be present only once in the response. Possible statuses are mentioned in the table below.

Note that the FaultCodes returned by this method are in addition to the FaultCodes returned by GetAuthenticationToken as Authentication Header is a part of all the requests.

Fault Codes

FaultString	FaultCode	Detail
E00701	Client	TransactionNumber supplied does not belong to this subscriber.

Status Codes

StatusCode	Description
DRAFT	Given transaction is added to the system but Payment is yet to be attempted against it.
COMPLETED	Given transaction is completed successfully along with the payment.
TIMEDOUT	This status is created only in case of POLi payment when user fails to enter his information on POLi within the restricted time.
FAILED	Transaction status is updated to Failed when the payment against that transaction fails.
CANCELLED	A cancelled transaction means the user cancelled the payment process before its completion.

Payment Methods

All the payment mode operations are categorized as Payment Methods hereafter.

AddPaymentCC

As the name suggests, this method will allow 3rd parties to complete a transaction using Credit Card details. Consumer will invoke this operation and CONFIDIS platform in turn, will call its integration with Payment Gateway to complete the



transaction. Response to this method is expected to include URL of the transaction detail view on the CONFIDIS platform.

Refer to the Image 5 below for this method's analogous screen in the web application -

Real Estate FUNDS Funds Management and Disbursement Platform

Step 1 : Your details Step 2 : Reference - Property/Contract Step 3 : Confirm details **Step 4 : Make payment**

Add holding deposit Step 4 of 4

Payment

Credit Card Type* :

Credit Card Number* :

Card Security Code (CSC)* :

Card Expiry Date (YY/MM)* : /

Image 5: Credit Card Payment page on CONFIDIS

Implementation

Live WSDL Address

SOAP <http://www.realestatefunds.com.au/addfunds/AddfundsServices?wsdl>

Beta WSDL Address

SOAP <http://www.realestatefunds.com.au/Beta/AddfundsServices?wsdl>

Operation

AddPaymentCC

*Sample Request:*

HTTP/1.1 OK

Content-Type: text/xml

```

<soapenv:Envelope xmlns:soapenv="http://schemas.xmlsoap.org/soap/envelope/"
xmlns:add="https://secure.realestatefunds.com.au/addfundsws/">
  <soapenv:Header>
    <add:Authentication>
      <APIKey>E4C9A7CF6DF3780E</APIKey>
      <APICode>07EBBB7F3771</APICode>
      <AuthToken>f4685845d63630641a9b9abf6152eab69cd8188eb2e8f432e573ae85831c49f9</AuthToken>
      <ClientUsername>refanand3@gmail.com</ClientUsername>
      <SourceIPAddress>127.0.0.1</SourceIPAddress>
    </add:Authentication>
  </soapenv:Header>
  <soapenv:Body>
    <add:AddPaymentCC>
      <TransactionNumber>33047F53</TransactionNumber>
      <CCDetails>
        <CardType>Mastercard</CardType>
        <CardholderName>Anand Inamdar</CardholderName>
        <CardNumber>5123456789012346</CardNumber>
        <CardCSC>123</CardCSC>
        <ExpiryMonth>05</ExpiryMonth>
        <ExpiryYear>17</ExpiryYear>
      </CCDetails>
    </add:AddPaymentCC>
  </soapenv:Body>
</soapenv:Envelope>

```

Request Field Descriptions

Field Name	Field Type	Max Length	Data Type	Description
Authentication	M	NA	complex element	This is a complex elements that nests all the authentication parameters. Should be present only once in the request.
APIKey	M	32	string	API Consumer identifier key. CONFIDIS will provide this value to the consumer. Should be present only once in the request.
APICode	M	32	string	API Consumer identifier code. Used along with



				<p>the API Key to authenticate API consumer.</p> <p>CONFIDIS will provide this value to the consumer.</p> <p>Should be present only once in the request.</p>
AuthToken	M	32	string	<p>AuthToken is the token provided by server after initial authentication.</p> <p>This should be set to the value returned by the GetAuthenticationToken method.</p> <p>Should be present only once in the request.</p>
ClientUsername	M	100	string	<p>To be cross verified against the user's username.</p> <p>This string is used by the consumer to login into the CONFIDIS web application.</p> <p>Should be present only once in the request.</p>
SourceIPAddress	M	NA	string	<p>Source IP address. System should validate this parameter against an IPv4 regex.</p> <p>To be stored against the request for security measures.</p> <p>Should be present only once in the request.</p>
AddPaymentCC	M	NA	complex element	<p>This element nests all the request parameters inside it.</p> <p>Should be present only once in the request.</p>
TransactionNumber	M	16	string	<p>Transaction Number must be the same as what was returned in AddTransactionDetails method.</p>
CCDetails	M	NA	complex element	<p>This nests all the CC details inside it.</p> <p>Should be present in the request only once.</p>
CardTypeCode	M	1	string	<p>Identifier to differentiate Mastercard and Visa credit cards.</p>
CardholderName	M	100	string	<p>Name of the cardholder.</p>
CardNumber	M	16	numeric	<p>Credit Card number.</p>
CardCSC	M	3	numeric	<p>Credit card security code.</p>
ExpiryYear	M	4	numeric	<p>Expiry year of the credit card. (YY)</p>
ExpiryMonth	M	2	numeric	<p>Expiry month of the credit card.(MM)</p>



PaymentMethod Codes

PaymentMethod Code	PaymentMethod Name
CreditCard	Credit Card
Poli	POLi
ManualeFT	ManualeFT

CardType Codes

CardType Code	Card Type Name
Mastercard	Mastercard
Visa	Visa

Sample Response:

```
<SOAP-ENV:Envelope xmlns:SOAP-ENV="http://schemas.xmlsoap.org/soap/envelope/"
xmlns:ns1="https://secure.realestatefunds.com.au/addfundsws/">
  <SOAP-ENV:Body>
    <ns1:AddPaymentCCResponse>
      <RequestInfo>
        <RequestId>53e1f04876efb</RequestId>
      </RequestInfo>
      <PaymentResponse>
        <PaymentResponseMessage>Payment completed successfully</PaymentResponseMessage>
        <TransactionDetailsURL>
https://www.realestatefunds.com.au/Beta/Subscribers/transaction\_detail/Iy1TKFgKYAo=/Iy0jQFYKYAo=
        </TransactionDetailsURL>
      </PaymentResponse>
    </ns1:AddPaymentCCResponse>
  </SOAP-ENV:Body>
</SOAP-ENV:Envelope>
```

Response Field Descriptions

Field Name	Max Length	Data Type	Description
AddPaymentCCResponse	NA	complex element	This is a complex element that nests all the Response parameters inside it.
RequestInfo	NA	complex element	This is a complex element that nests requestId inside it.
RequestId	16	numeric	Unique identifier for every request served by CONFIDIS platform. This parameter can later be used to track down historical/archived requests & responses.



			Will be present only once in the response.
PaymentResponse	NA	complex element	This element contains response parameters inside it. Will be present only once in the response.
PaymentResponseMessage	100	string	This parameter complements the payment response code. Will be present only once in the response. Combination of PaymentResponseCode and PaymentResponseMessage is tabulated below.
TransactionDetailsURL	100	string	This parameter returns the Transaction Detail URL created on the CONFIDIS platform. Will be present only once in the response.

Note that the FaultCodes returned by this method are in addition to the FaultCodes returned by GetAuthenticationToken as Authentication Header is a part of all the requests.

Fault Codes

FaultString	Detail
E00301	Invalid TransactionNumber
E00302	Invalid CardType
E00303	Invalid CardNumber
E00304	Invalid CardCSC, Max 3 digit number is allowed
E00305	Invalid ExpiryYear, Max 2 digit number is allowed
E00306	Invalid ExpiryMonth, Max 2 digit number is allowed
E00307	Credit card type and credit card number do not match
E00308	Transaction is already processed once. Please create new transaction
E00309	TransactionNumber supplied does not belong to this subscriber
E00310	Payment completed successfully
E00311	Payment could not be completed
E00312	Unknown error, payment could not be completed



GetEFTDetails

This method is to be used when the end user selects to complete the transaction via Manual EFT transaction.

GetEFTDetails will return the instructions for completing EFT payment along with Trust account details(different for each deposit type) and Bank website URLs available in the CONFIDIS's database. Image 6 below is the analogous screen on CONFIDIS web platform.



Add part or full deposit Step 4 of 4

Payment

Manual EFT-electronic funds transfer:

Please read carefully: These instructions are for transferring monies directly from your institution into Real Estate funds Pty Ltd (ABN 49 157 756 039) Trust Accounts.

Follow these steps:

Step 1 Select your institution; selected link will directly open your institutions online login screen in a new window; within your institutions transfer/pay-anyone screen, add the following:

Step 2 Reference Property/Contract

Step 3 Amount

Step 4 Real Estate Funds Pty Ltd trust account details

Step 5 Return to this window

Step 6 Add your receipt of payment number, provided by your institution here

Step 7 Optional: add payment information if necessary

Step 8 Select 'Submit'

If your institution is not listed here, please follow above steps 2, 3 and 4 via your own access/login screen.

● Australia

● All

- Australian-owned Banks
- Branches of Foreign Banks
- Building Societies
- Credit Unions
- Foreign Subsidiary Banks

Step 1 Select your institution

- Allied Members Credit Union Ltd
- AMP Bank Ltd
- ANZ Australia and New Zealand Banking Group Limited
- Arab Bank Australia Limited
- Australian Defence Credit Union Limited
- AWA Credit Union Limited
- B & E Ltd
- Bananacoast Community Credit Union Ltd
- Banco Santander, S.A.

Step 1 Proceed To Your Selected Institution ?

Step 2 Reference Property/Contract

Step 3 Amount (AUD \$)

Step 4 See Below

Step 5 Return to this window

Step 6 Reference * ?

Step 7 Payment information (optional):

Step 8 Select 'Submit' below

Step 4 Real Estate Funds Pty Ltd Deposit trust Account details.

Account name :	Real Estate Funds Pty Ltd - Deposits
Bank :	ANZ - Australia and New Zealand Banking Group Limited
Branch :	Campsie (New South Wales, Australia)
BSB :	012260
Account number :	288005387

Image 6: GetEFTDetails analogous screen on CONFIDIS Web application



Implementation

Live WSDL Address

SOAP <http://www.realestatefunds.com.au/addfunds/AddfundsServices?wsdl>

Beta WSDL Address

SOAP <http://www.realestatefunds.com.au/Beta/AddfundsServices?wsdl>

Operation

GetEFTDetails

Sample Request:

```
HTTP/1.1 OK
Content-Type: text/xml

<? xml version="1.0" encoding="utf-8" ?>
<SoapEnvelope>
  <SoapHeader>
    <Authentication>
      <APIKey>E422460607003CBC</APIKey>
      <APICode>8B62A4B723A9</APICode>
      <AuthToken>d131dd02c5e6eec4</AuthToken>
      <ClientUsername>refanand@gmail.com</ClientUsername>
      <SourceIPAddress>127.0.0.1</SourceIPAddress>
    </Authentication>
  </SoapHeader>
  <SoapBody>
    <GetEFTDetailsRequest>
      <DepositTypeCode>1</DepositTypeCode>
    </GetEFTDetailsRequest>
  </SoapBody>
</SoapEnvelope>
```

Request Field Descriptions

Field Name	Field Type	Max Length	Data Type	Description
Authentication	M	NA	complex element	This is a complex elements that nests all the authentication parameters. Will be present only once in the request.
APIKey	M	32	string	API Consumer identifier key. CONFIDIS will provide this value to the consumer. Will be present only once in the request.
APICode	M	32	string	API Consumer identifier code. Used along with the API Key to authenticate API consumer.



				<p>CONFIDIS will provide this value to the consumer.</p> <p>Will be present only once in the request.</p>
AuthToken	M	32	string	<p>AuthToken is the token provided by server after initial authentication.</p> <p>This should be set to the value returned by the GetAuthenticationToken method.</p> <p>Will be present only once in the request.</p>
ClientUsername	M	100	string	<p>To be cross verified against the user's username.</p> <p>This string is used by the consumer to login into the CONFIDIS web application.</p> <p>Will be present only once in the request.</p>
SourceIPAddress	M	NA	string	<p>Source IP address. System should validate this parameter against an IPv4 regex.</p> <p>To be stored against the request for security measures.</p> <p>Will be present only once in the request.</p>
GetEFTDetails	M	NA	complex element	<p>This element nests all the request parameters inside it.</p> <p>Will be present only once in the request.</p>
DepositTypeCode	M	1	numeric	<p>Deposit type identifier for which EFT details are needed.</p> <p>Will be present only once in the response.</p> <p>Possible values are enumerated below.</p>

DepositType Codes

DepositType Code	DepositType Name
1	Holding deposit
2	Deposit
3	Commission

*Sample Response:*

```

<SOAP-ENV:Envelope xmlns:SOAP-ENV="http://schemas.xmlsoap.org/soap/envelope/"
xmlns:ns1="https://secure.realestatefunds.com.au/addfundsws/">
  <SOAP-ENV:Body>
    <ns1:GetEFTDetailsResponse>
      <RequestInfo>
        <RequestId>53e1f2a78ab21</RequestId>
      </RequestInfo>
      <TrustAccountDetails>
        <AccountName>Real1 1Estate Funds Pty Ltd – Commissions</AccountName>
        <AccountNumber>ttt</AccountNumber>
        <BSB>1234</BSB>
        <Bank>ANZ1 – 19 Australia and New Zealand Banking Group Limited</Bank>
        <Branch>Campsie12</Branch>
      </TrustAccountDetails>
      <EFTInstructions>Please read carefully: These instructions are for transferring monies directly from your
institution into Real Estate funds Pty Ltd (ABN 49 157 756 039) Trust Accounts. Follow these steps: Step 1 : Select
your institution; selected link will directly open your institutions online login screen in a new window; within your
institutions transfer/pay-anyone screen, add the following: Step 2 : Reference Property/Contract Step 3 : Amount
Step 4 : Real Estate Funds Pty Ltd trust account details Step 5 : Return to this window Step 6 : Add your receipt of
payment number, provided by your institution here Step 7 : Optional: add payment information if necessary Step 8
: Select Submit If your institution is not listed here, please follow above steps 2, 3 and 4 via your own access/login
screen.</EFTInstructions>
      <Institutions>
        <Institution>
          <CountryCode>AU</CountryCode>
          <Name>Allied Members Credit Union Ltd</Name>
          <Group>Credit Unions</Group>
          <WebURL>https://is2.cuviewpoint.net/mvpamcu/Login.asp</WebURL>
        </Institution>
      </Institutions>
    </ns1:GetEFTDetailsResponse>
  </SOAP-ENV:Body>
</SOAP-ENV:Envelope>

```

Response Field Descriptions

Field Name	Max Length	Data Type	Description
GetEFTDetailsResponse	NA	complex element	This is a complex element that nests all the Response parameters inside it.
RequestInfo	NA	complex element	This element nests requestId parameter inside it.
RequestId	16	numeric	Unique identifier for every request served by CONFIDIS platform. This parameter can later be used to track down historical/archived requests & responses.



			Will be present only once in the response.
TrustAccountDetails	NA	complex element	This element nests the Trust account related information inside it. Could be present more than once in the response.
AccountName	100	string	Name of the trust account. Will be present only once in the response.
Bank	100	string	Name of the bank that holds trust account of Real Estate Funds. Will be present only once in the response.
Branch	100	string	Name of the branch that holds trust account of Real Estate Funds. Will be present only once in the response.
BSB	20	numeric	BSB Number of the branch that holds trust account of Real Estate Funds. Will be present only once in the response.
AccountNumber	20	numeric	Account number of the trust account for selected deposit type. Will be present only once in the response.
EFTInstructions	1000	string	Textual instructions for completing an EFT transaction on CONFIDIS's system. Will be present only once in the response.
Institutions	NA	complex element	This element accommodates all the institutions inside it. Will be present only once in the response.
Institution	NA	complex element	This element nests inside it all the parameters related to institution entity. Will be present only once in the response.
Group	100	string	Category of the institution, can be used by consumer to classify available institutions. Could be present more than once when Institution complex element is repeated.
Name	100	string	Name of the institution of which details are available in the response. Could be present more than once when



			Insitution complex element is repeated.
URL	100	string	Login address of the Institution of which details are available in the response. Could be present more than once when Institution complex element is repeated.

Note that the FaultCodes returned by this method are in addition to the FaultCodes returned by GetAuthenticationToken as Authentication Header is a part of all the requests.

Fault Codes

FaultString	FaultCode	Detail
E701	Client	EFT Details not available.

AddPaymentEFT

As the name implies, this method helps consumers complete an EFT transaction on CONFIDIS platform. Call to this method would be preceded by GetEFTDetails method. Since all the EFTs are performed on the end user's institution, this method only expects reference number/payment receipt number of that EFT transaction.

Implementation

Live WSDL Address

SOAP <http://www.realestatefunds.com.au/addfunds/AddfundsServices?wsdl>

Beta WSDL Address

SOAP <http://www.realestatefunds.com.au/Beta/AddfundsServices?wsdl>

Operation

AddPaymentEFT

*Sample Request:*

```

<soapenv:Envelope xmlns:soapenv="http://schemas.xmlsoap.org/soap/envelope/"
xmlns:add="https://secure.realestatefunds.com.au/addfundsws/">
  <soapenv:Header>
    <add:Authentication>
      <APIKey>E4C9A7CF6DF3780E</APIKey>
      <APICode>07EBBB7F3771</APICode>
      <AuthToken>8ae04b133c23bead947265dbade2611b83ad10c76a7375d9e5ea65633566ec25</AuthToken>
      <ClientUsername>refanand3@gmail.com</ClientUsername>
      <SourceIPAddress>127.0.0.1</SourceIPAddress>
    </add:Authentication>
  </soapenv:Header>
  <soapenv:Body>
    <add:AddPaymentEFT>
      <TransactionNumber>51AED379</TransactionNumber>
      <EFTDetails>
        <PaymentReceiptNumber>12345</PaymentReceiptNumber>
        <PaymentInformation>Test</PaymentInformation>
      </EFTDetails>
    </add:AddPaymentEFT>
  </soapenv:Body>
</soapenv:Envelope>

```

Request Field Descriptions

Field Name	Field Type	Max Length	Data Type	Description
Authentication	M	NA	complex element	This is a complex elements that nests all the authentication parameters. Should be present only once in the request.
APIKey	M	32	string	API Consumer identifier key. CONFIDIS will provide this value to the consumer. Should be present only once in the request.
APICode	M	32	string	API Consumer identifier code. Used along with the API Key to authenticate API consumer. CONFIDIS will provide this value to the consumer. Should be present only once in the request.
AuthToken	M	32	string	AuthToken is the token provided by server after initial authentication. This should be set to the value returned by the



				<p>GetAuthenticationToken method.</p> <p>Should be present only once in the request.</p>
ClientUsername	M	100	string	<p>To be cross verified against the user's username.</p> <p>This string is used by the consumer to login into the CONFIDIS web application.</p> <p>Should be present only once in the request.</p>
SourceIPAddress	M	NA	string	<p>Source IP address. System should validate this parameter against an IPv4 regex.</p> <p>To be stored against the request for security measures.</p> <p>Should be present only once in the request.</p>
AddPaymentEFT	M	NA	complex element	<p>This element wraps around all the request parameters.</p> <p>Should be present only once in the request.</p>
TransactionNumber	M	16	string	<p>Transaction Number must be the same as what was returned in AddTransactionDetails method.</p>
EFTDetails	M	NA	complex element	<p>This element wraps inside it the EFT details.</p> <p>Should be present in the request only once.</p>
PaymentReceiptNumber	M	20	string	<p>Receipt number provided by the end user's institution.</p> <p>Should be present in the request only once.</p>
PaymentInformation	O	100	string	<p>Additional payment information if needed, can be provided by the user.</p> <p>Should be present in the request only once.</p>

*Sample Response:*

```

<SOAP-ENV:Envelope xmlns:SOAP-ENV="http://schemas.xmlsoap.org/soap/envelope/"
xmlns:ns1="https://secure.realestatefunds.com.au/addfundsws/">
  <SOAP-ENV:Body>
    <ns1:AddPaymentEFTResponse>
      <RequestInfo>
        <RequestId>53e213deb2f22</RequestId>
      </RequestInfo>
      <PaymentResponse>
        <PaymentResponseMessage>Payment completed successfully</PaymentResponseMessage>
        <TransactionDetailsURL>
          https://www.realestatefunds.com.au/Beta/Subscribers/transaction_detail/ly1TLFEKYAo=/ly0jQFkKYAo=
        </TransactionDetailsURL>
      </PaymentResponse>
    </ns1:AddPaymentEFTResponse>
  </SOAP-ENV:Body>
</SOAP-ENV:Envelope>

```

Response Field Descriptions

Field Name	Max Length	Data Type	Description
AddPaymentEFTResponse	NA	complex element	This is a complex element that nests all the Response parameters inside it.
RequestInfo	NA	complex element	This element nests requestId parameter inside it.
RequestId	16	numeric	Unique identifier for every request served by CONFIDIS platform. This parameter can later be used to track down historical/archived requests & responses. Will be present only once in the response.
PaymentResponse	NA	complex element	This is a complex element that nests all the payment Response parameters inside it.
PaymentResponseMessage	100	string	This parameter complements the payment response code. Will be present only once in the response. Combination of PaymentResponseCode and PaymentResponseMessage is tabulated below.
TransactionDetailsURL	100	string	This parameter returns the Transaction Detail URL created on the CONFIDIS platform. Will be present only once in the response.



Note that the FaultCodes returned by this method are in addition to the FaultCodes returned by GetAuthenticationToken as Authentication Header is a part of all the requests.

Fault Codes

FaultString	Detail
E00501	PaymentReceiptNumber can not be blank
E00502	PaymentReceiptNumber should be minimum 4 characters long

AddPaymentPOLi

POLi payment is another mode of payment offered on the CONFIDIS platform. It is different from CC & EFT Payments since it requires the end users to enter their details on pages hosted by POLi.

For CC & EFT all the details were channeled through the CONFIDIS platform and the CONFIDIS system ensured that the transactions were routed to respective payment authorities. Thus the role of mediator that is played by CONFIDIS platform for CC & EFT payment modes is no longer valid for POLi payments. AddPaymentPOLi method caters to the unique needs of completing a transaction via POLi.

Following steps will be executed behind the AddPaymentPOLi method

- 1) CONFIDIS system will receive request from the consumer
- 2) CONFIDIS will identify the client and other details and trigger a new request including these details to POLi
- 3) POLi will respond with the URL for end user redirection
- 4) CONFIDIS system will pass this URL back to the consumer

Then it is the consumer's responsibility to redirect user to the URL in step 4 (Note that the redirected page will be CONFIDIS branded since the POLi request is generated by CONFIDIS). When user enters the details the response will be rendered on a client co-branded page hosted by CONFIDIS (this is necessary as CONFIDIS system will get the response from POLi and then only it can decide whether the transaction was successful or failed midway.)

Encryption/Decryption

When CONFIDIS system gets the response from POLi, it sends back success/failure back to the consumer. This success/failure is a POST message from CONFIDIS to the consumer platform in which following encryption is used. Consumer will have to decrypt it using the latter code snippet.

That means the input success/failure URLs consumer is sending in the AddPOLi method should have the capability to grasp the data when a form is posted to them.



Data is encrypted using AES (128 block size) and then encoded into base64 so that it can be represented as string.

`secretKey` and `initialVector` are api key of user.

Code to encrypt

```
function encrypt($message, $initialVector, $secretKey) {
    return base64_encode(
        mcrypt_encrypt(
            MCRYPT_RIJNDAEL_128,
            $secretKey,
            $message,
            MCRYPT_MODE_CFB,
            $initialVector
        )
    );
}
```

Code to decrypt

```
function decrypt($data, $initialVector, $secretKey) {
    return mcrypt_decrypt(
        MCRYPT_RIJNDAEL_128,
        $secretKey,
        base64_decode($data),
        MCRYPT_MODE_CFB,
        $initialVector
    );
}
```

Implementation

Live WSDL Address

SOAP <http://www.realestatefunds.com.au/addfunds/AddfundsServices?wsdl>

Beta WSDL Address

SOAP <http://www.realestatefunds.com.au/Beta/AddfundsServices?wsdl>

Operation

AddPaymentPOLi

*Sample Request:*

```

HTTP/1.1 OK
Content-Type: text/xml

<? xml version="1.0" encoding="utf-8" ?>
<SoapEnvelope>
  <SoapHeader>
    <Authentication>
      <APIKey>E422460607003CBC</APIKey>
      <APICode>8B62A4B723A9</APICode>
      <AuthToken>d131dd02c5e6eec4</AuthToken>
      <ClientUsername>refanand@gmail.com</ClientUsername>
      <SourceIPAddress>127.0.0.1</SourceIPAddress>
    </Authentication>
  </SoapHeader>
  <SoapBody>
    <AddPaymentPOLi>
      <TransactionNumber>THD-849F5BB2</TransactionNumber>
      <POLiDetails>
        <SuccessfulClientURL>
          https://www.client.com.au/transaction/successpage</SuccessfulClientURL>
        <FailedClientURL>
          https://www.client.com.au/transaction/failurepage</FailedClientURL>
        <HomeClientURL>
          https://www.client.com.au/transaction/homepage</HomeClientURL>
      </POLiDetails>
    </AddPaymentPOLi>
  </SoapBody>
</SoapEnvelope>

```

Request Field Descriptions

Field Name	Field Type	Max Length	Data Type	Description
Authentication	M	NA	complex element	This is a complex element that nests all the authentication parameters. Should be present only once in the request.
APIKey	M	32	string	API Consumer identifier key. CONFIDIS will provide this value to the consumer. Should be present only once in the request.
APICode	M	32	string	API Consumer identifier code. Used along with the API Key to authenticate API consumer. CONFIDIS will provide this value to the



				consumer. Should be present only once in the request.
AuthToken	M	32	string	AuthToken is the token provided by server after initial authentication. This should be set to the value returned by the GetAuthenticationToken method. Should be present only once in the request.
ClientUsername	M	100	string	To be cross verified against the user's username. This string is used by the consumer to login into the CONFIDIS web application. Should be present only once in the request.
SourceIPAddress	M	NA	string	Source IP address. System should validate this parameter against an IPv4 regex. To be stored against the request for security measures. Should be present only once in the request.
AddPaymentPOLi	M	NA	complex element	This element wraps all the request parameters within it. Should be present only once in the request.
TransactionNumber	M	16	string	Transaction Number must be the same as what was returned in AddTransactionDetails method.
POLiDetails	M	NA	complex element	This element nests inside it all the POLi related details required from the consumer. Should be present only once in the request.
SuccessfulClientURL	M	100	string	URL to which consumer wants user redirected after payment was completed successfully.
FailedClientURL	M	100	string	URL to which consumer wants user redirected after payment failure.
HomeClientURL	M	100	string	Homepage URL of the consumer.

*Sample Response:*

```
<SOAP-ENV:Envelope xmlns:SOAP-ENV="http://schemas.xmlsoap.org/soap/envelope/"
xmlns:ns1="https://secure.realestatefunds.com.au/addfundsws/">
  <SOAP-ENV:Body>
    <ns1:AddPaymentPOLiResponse>
      <RequestInfo>
        <RequestId>53e216d5d7691</RequestId>
      </RequestInfo>
      <PaymentResponse>
        <PaymentResponseMessage>Payment completed successfully</PaymentResponseMessage>
        <POLiURL>
          https://txn.apac.paywithpoli.com/?token=hEtZ6YmvKtzC3%2b9v15TwbmfAWpDyNYAN</POLiURL>
        </PaymentResponse>
      </ns1:AddPaymentPOLiResponse>
    </SOAP-ENV:Body>
  </SOAP-ENV:Envelope>
```

Response Field Descriptions

Field Name	Max Length	Data Type	Description
RequestInfo	NA	complex element	This is a complex element that nests RequestId inside it.
RequestId	16	numeric	Unique identifier for every request served by CONFIDIS platform. This parameter can later be used to track down historical/archived requests & responses. Will be present only once in the response.
PaymentResponse	NA	complex element	This element wraps the complete response inside it. Will be present only once in the response.
PaymentResponseMessage	100	string	This parameter complements the payment response code. Will be present only once in the response. Combination of PaymentResponseCode and PaymentResponseMessage is tabulated below.
POLiURL	100	string	This parameter returns the POLi redirect URL to the consumer. Will be present only once in the response.



Note that the FaultCodes returned by this method are in addition to the FaultCodes returned by GetAuthenticationToken as Authentication Header is a part of all the requests.

Fault Codes

FaultString	Detail
E00601	POLiDetails - SuccessfulClientURL cannot be blank
E00602	POLiDetails - SuccessfulClientURL is invalid
E00603	POLiDetails - FailedClientURL cannot be blank
E00604	POLiDetails - FailedClientURL is invalid
E00605	POLiDetails - HomeClientURL cannot be blank
E00606	POLiDetails - HomeClientURL is invalid
E00607	Unknown error, payment could not be completed. Please try again
E00608	Deposit amount exceeds limits of \$1000, please try again with amount less than max limit

Testing guidelines for Confidis APIs

Confidis APIs are initially going to be developed as SOAP web services. Consumers can try playing around with the webservicess using Soap UI.

[SOAP UI Download](#)

SOAP UI is a dedicated application to test SOAP Web services. Using the WSDL definition, one can generate bindings and sample requests-responses. By defining the end points and request data user can hit the application server and retrieve response.

Beta Environment for Confidis APIs

Note that Web services in the Beta environment should be used by the consumers for integrating their system with CONFIDIS's. All the payment mechanisms in Beta environment will be pointing towards the respective testing environments thus ensuring the complete transaction is a dummy one.